

MEETING FACILITY SPECS

MEETING FACILITIES

We offer online tools as well as a professional, experienced staff to assist you. Lakeway Resort and Spa is widely recognized as one of the top meeting destinations in Texas and is a Elite Meetings Gold 2011 recognized hotel. With over 24,000 square feet of state-of-the art meeting space, including 17 meeting rooms and 4 large ballrooms ranging from 4,000-5,800 square feet, soundproof rooms with individual temperature, lighting and sound controls, and all rooms featuring ergonomic chairs and hardtop conference tables, your meeting experience will be perfect from start to finish.

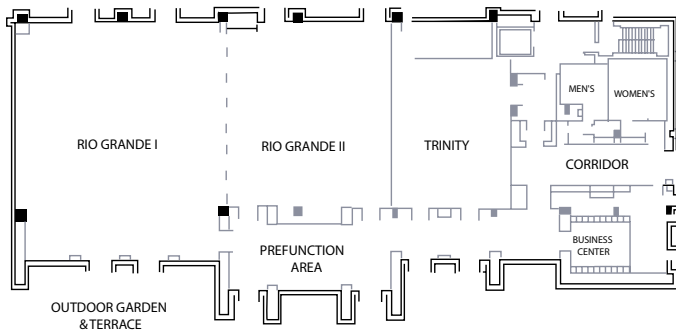
In addition, we offer two large meeting rooms with permanent projection capabilities, A/V controls, computer graphics capability, multipurpose lighting, music and sound systems to accommodate the most dramatic presentations. Our skilled on-site Conference Services Staff, in-house A/V Technicians, IT Support and Professional Conference Managers are available to plan every detail for you. At Lakeway Resort and Spa, we offer a Complete Meeting Package (CMP) which includes overnight accommodations, meeting rooms, 3 meals a day, continuous morning and afternoon breaks, and standard A/V equipment all for one economical price. In addition, we also offer traditional a la carte pricing for all your meeting needs. For extra fun, Team Building Programs are provided by Team Craft and Highest Vision.

CAPACITY CHART

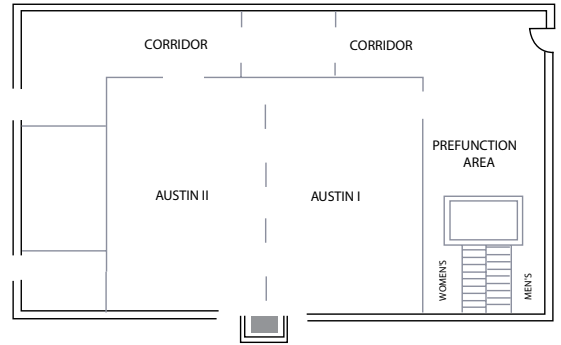
Meeting Rooms	Total Sq. Ft.	Room Size	Ceiling Ht.	Classroom	Theater	Banquet 10	Reception	Conference	U-Shape	H-Square
Austin Room	4000	74' x 54'	16'	220	360	240	300	20	N/A	N/A
Austin Room Section I	1998	37' x 54'	16'	90	160	110	150	20	50	60
Austin Room Section II	1998	37' x 54'	16'	100	160	110	150	20	50	60
Boardroom	836	22' x 38'	N/A	N/A	N/A	16	N/A	16	N/A	N/A
Colorado Room	4000	129' x 31'	8' 9"	200	N/A	220	300	20	N/A	90
Colorado Room Section I	1457	47' x 31'	8' 9"	65	100	60	75	20	36	44
Colorado Room Section II	961	31' x 31'	8' 9"	35	40	40	350	20	18	28
Colorado Room Section III	2448	48' x 51'	8' 9"	70	100	90	120	20	40	40
Rio Grande Room	5800	100' x 58'	12'	300	450	320	450	20	N/A	N/A
Rio Grande Section I	3584	56' x 64'	12'	180	325	200	N/A	20	70	100
Rio Grande Section II	2200	44' x 50'	12'	90	200	120	N/A	20	40	60
San Marcos Room	558	18' x 31'	8' 9"	20	30	20	N/A	20	18	20
Trinity Room	1280	32' x 40'	12'	50	85	60	N/A	20	28	32
Vistas Room	5,150	103' x 50'	12'	190	350	300	450	20	68	80
Vistas Room Section I	2,400	50' x 48'	12'	84	150	150	200	20	34	40
Vistas Room Section II	2,750	50' x 55'	12'	108	200	150	215	20	34	40
Pecos Room	315	15' x 21'	9'	15	20	10	N/A	10	N/A	N/A
Guadalupe Room	315	15' x 21'	9'	15	20	10	N/A	10	N/A	N/A
Comal Room	864	27' x 32'	9'	35	45	40	60	20	22	24
Brazos Room	1,056	32' x 33'	9'	35	45	40	60	20	22	24

FLOOR PLANS

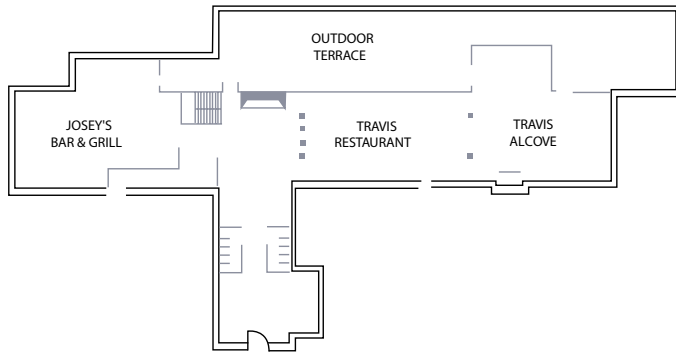
MAIN BUILDING



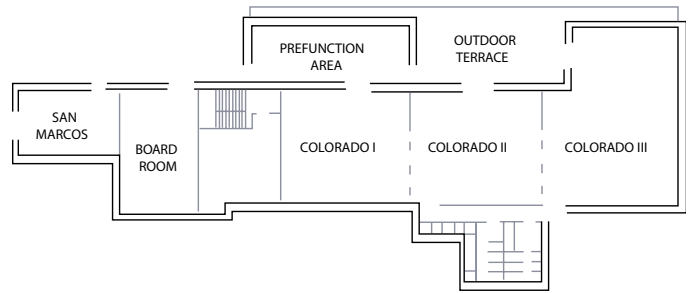
AUSTIN BUILDING



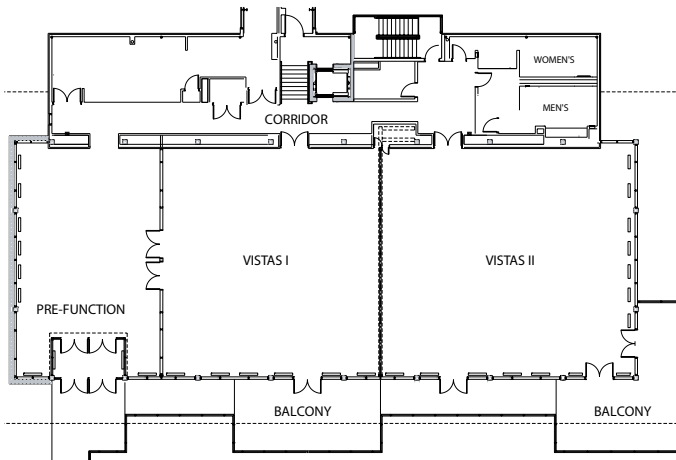
TRAVIS BUILDING - UPPER FLOOR



TRAVIS BUILDING - LOWER FLOOR



VISTAS BUILDING - UPPER FLOOR



VISTAS BUILDING - LOWER FLOOR

